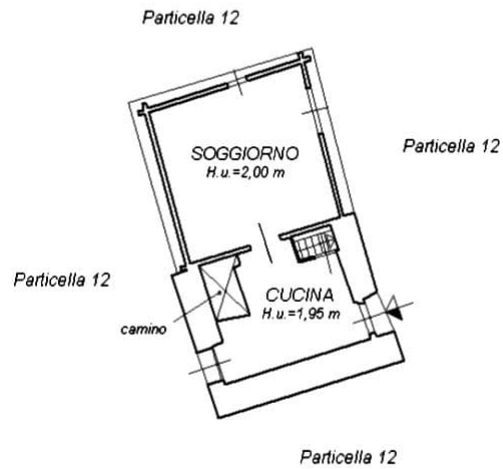
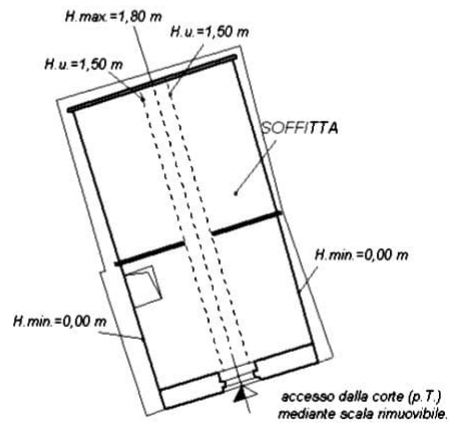


Piano Terreno (o Rialzato) -p.T.-



Piano Primo-Sottotetto -p.1-

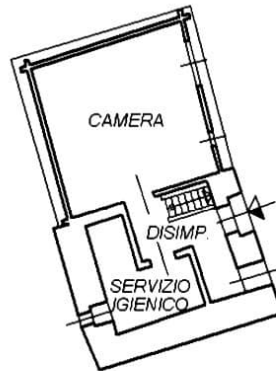
H. media = 0,90 m



Nord

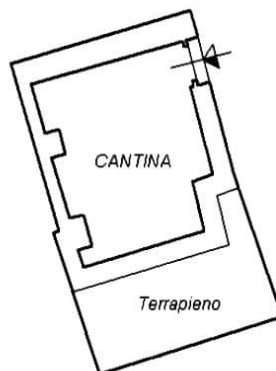
Piano Seminterrato (1° Sottostrada) -p.S1-

H. utile = 1,80 m



Piano Seminterrato (2° Sottostrada) -p.S2-

H. utile = 1,80 m



Nord